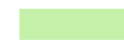




IAQ Map Legend - Winter Operation

 Natural ventilation: Operable windows and/or louvres should be used to manage fresh air, balancing thermal comfort and ventilation.

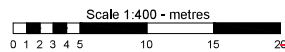
 Mechanical ventilation: Fresh air is introduced by the heating, ventilation and air conditioning system when in operation. Windows can remain closed and no action is required by the school.

 UV-C Lights: UV-C light units have been retrofitted to the air conditioning systems to neutralise airborne virus particles. In these rooms, the systems must be in operation when the room is occupied.

Note: White spaces are to be used in accordance with COVID-19 requirements and current health advice.



ISSUE	AMENDMENT	DRAWN	VER'D	APP'D	DATE



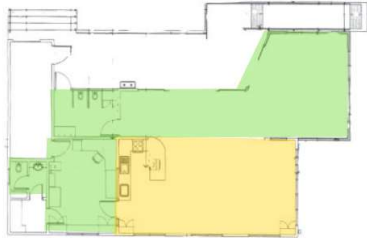
SCALE
1:400
DATE
OCTOBER 2015
DRAWING SHEET SIZE = A3



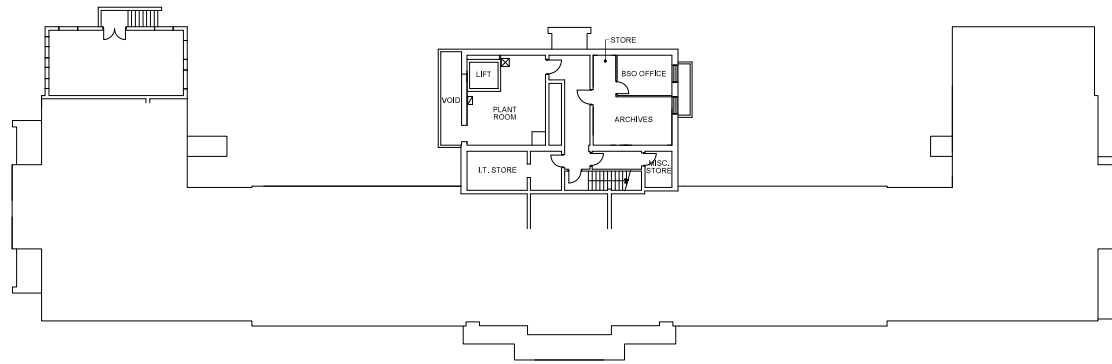
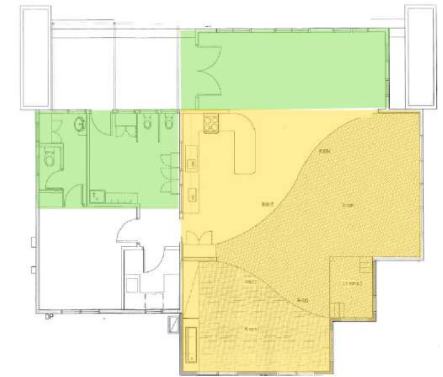
ACT
Government
Education and Training

PROJECT
AINSLIE SCHOOL
INFRASTRUCTURE & CAPITAL WORKS
SCHOOL LAYOUT PLAN
GROUND FLOOR

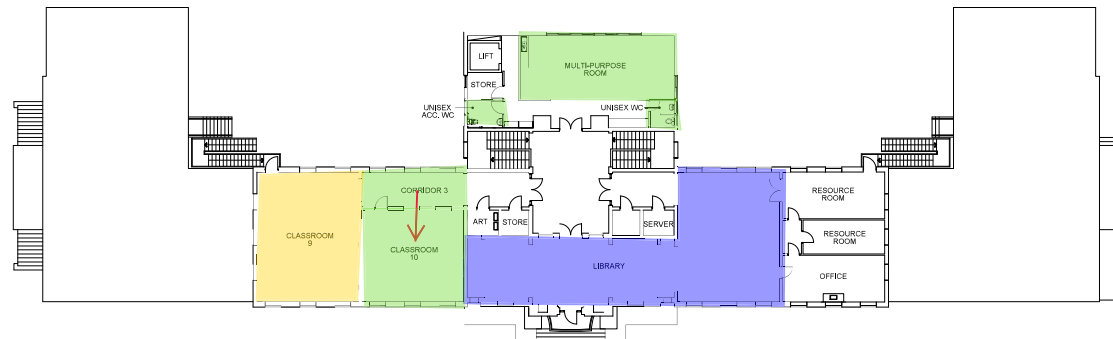
Ainslie Baker Gardens Preschool



Reid Preschool

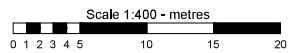


BASEMENT LEVEL



FIRST FLOOR

ISSUE	AMENDMENT	DRAWN	VER'D	APP'D	DATE



SCALE
1:400
DATE
OCTOBER 2015
DRAWING SHEET SIZE = A3



PROJECT
AINSLIE SCHOOL
INFRASTRUCTURE & CAPITAL WORKS
SCHOOL LAYOUT PLAN
MAIN BUILDING
BASEMENT & FIRST FLOOR